

# National Concept for Spatial Development 2013 – 2025

6-8 May 2015 METREX Lombardia Spring  
Conference

Milano EXPO 2015

Feeding the planet - Energy for life

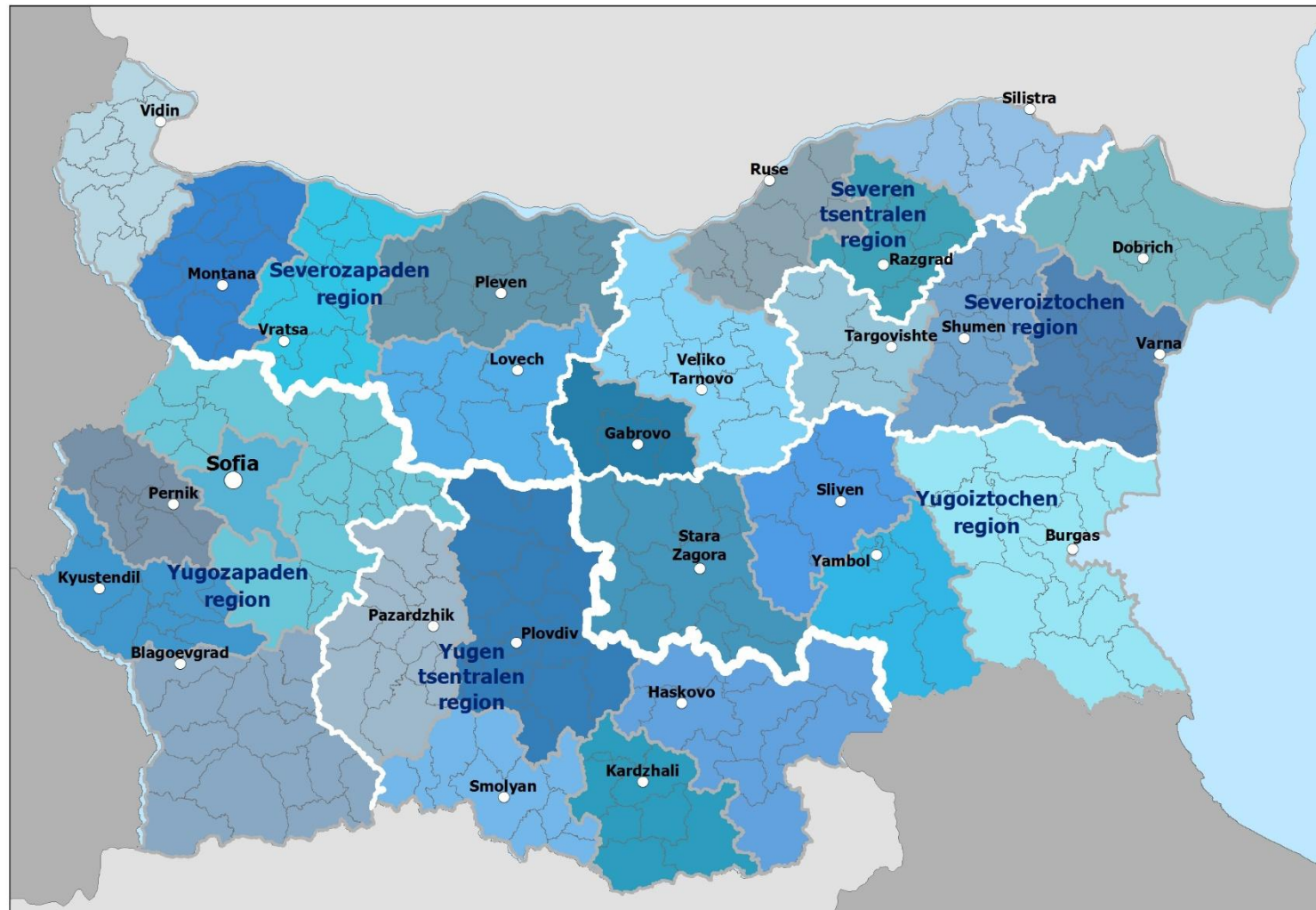
*Investing in your future*

# General Information

---

- Area: 111 000.9 sq. km
- Population - 7 168 009 (NSI, 2015)
- Urban population - 72.5%
- Age structure: 0-14 years of age – 13.2%, 15-64 – 68.3%, aged 65+ - 18.5%
- Population with higher education: 19.6%
- Population density: 66.3 p/sq. km
- 6 NUTS2 regions, 28 NUTS3 regions, 264 municipalities, 5 302 settlements (2011), 255 cities, 5047 villages

# Administrative structure



# General Information

---

- Road network density 0.18 km/sq. km
- Mineral springs: 148 deposits
- Nature protected areas: 5% of the national territory
- Protected zones NATURA 2000: 35% of the national territory
- 2 sites of the World natural heritage
- 7 sites of the World cultural heritage

# National level Spatial Planning

---

- The National Comprehensive Territorial Development Plan (1974 – 1978)
- The Complex Regional, Urban Planning and Architecture Research Institute – reorganized with the CoM decision 76/1976
- More than 320 experts and researchers
- NCSP - team of 30 experts, for 6 months
- Funded by the ERDF and the State Budget of the R.Bulgaria
- Adopted by the CoM Protocol 47/19.12.2012

# Main Aim

---

- The National Spatial Policy „....guarantees the protection of the territory of the country as a national treasure....“ (art. 1 Planning Act, 2001)
- „Spatial coordination of the processes, taking place at the national territory through creation of spatial planning base and regulator for implementation not only the regional, but also the single socio-economic sectorial planning at national level in the context of the European spatial development for achieving a complex integrated planning“.

# Vision

---

- **The national space of Bulgaria** – open to the world and integrated in the European space and in the European network of core-cities and axes of development, culture, science and innovations.
- **The well-preserved national resources** – the people, land, waters and forests, natural and cultural heritage – a guarantee for the national identity.
- **Balanced and sustainable integrated development**, achieved through rational organization of the economic, social, transport, engineering, cultural and tourist infrastructure, ensuring smart economic growth, adaptation to changes and equality.

# Basic principles

---

- Integrated Planning and complex treatment of all problems;
- Scientific approach to planning;
- Protected public interest;
- Publicity, transparency, partnership and public participation - 20 forums and seminars, working meetings and consultations (MOEW, MAF, MLSP, ARI etc.);
- Continuity and consistency of the planning process;
- Inter-, transdisciplinarity and synergy in ideas generation;
- Concentration – thematic, financial, geographic, resource and temporal;

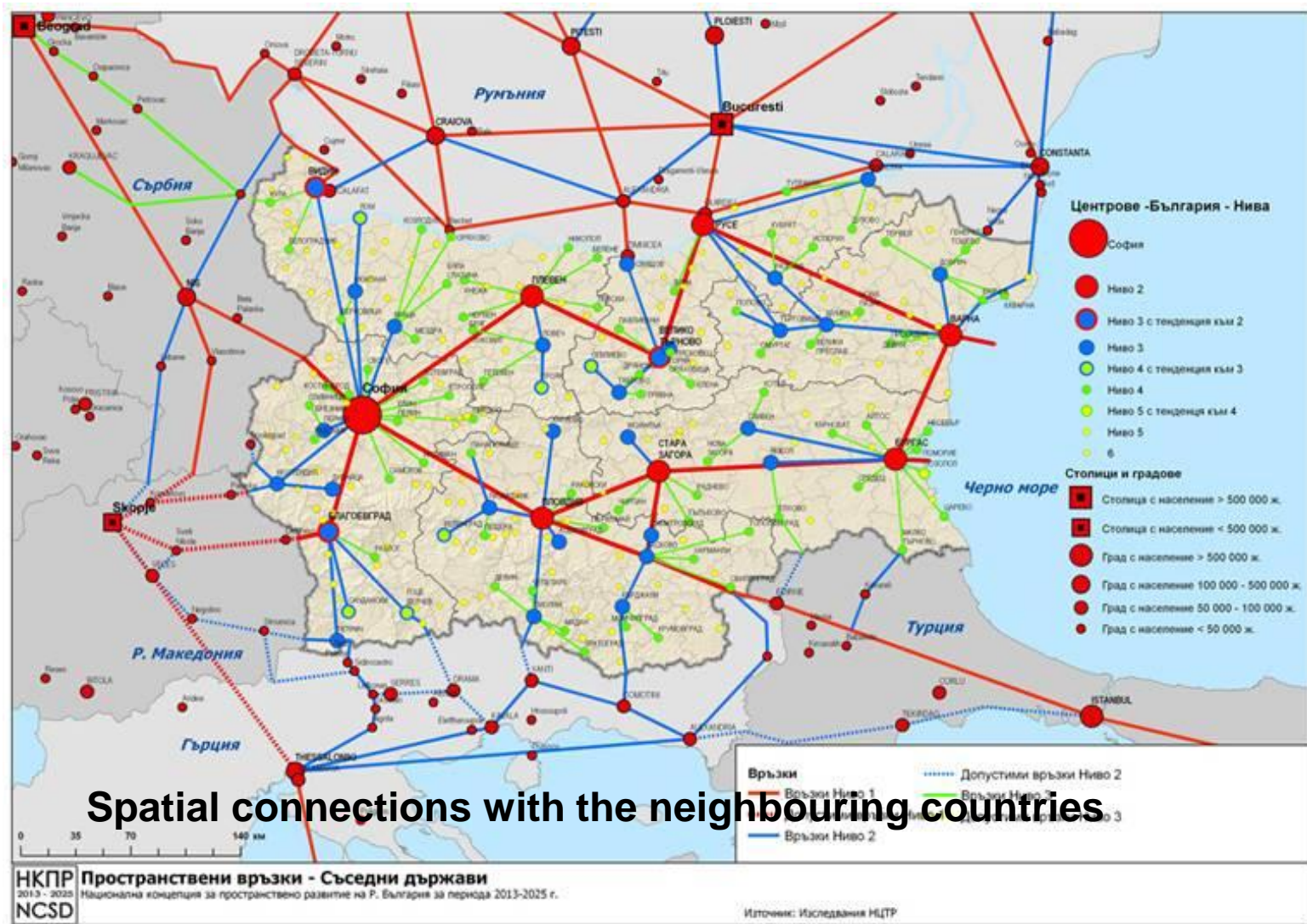


# Strategic Goals

---

- Strategic goal 1 Integration into the European space
- Strategic goal 2 Polycentric spatial development
- Strategic goal 3 Spatial cohesion and access to services
- Strategic goal 4 Preserved natural and cultural heritage
- Strategic goal 5 Stimulated development of specific areas
- Strategic goal 6 Competitiveness through growth and innovation zones

# SG1 Integration into the European space



Spatial connections with the neighbouring countries

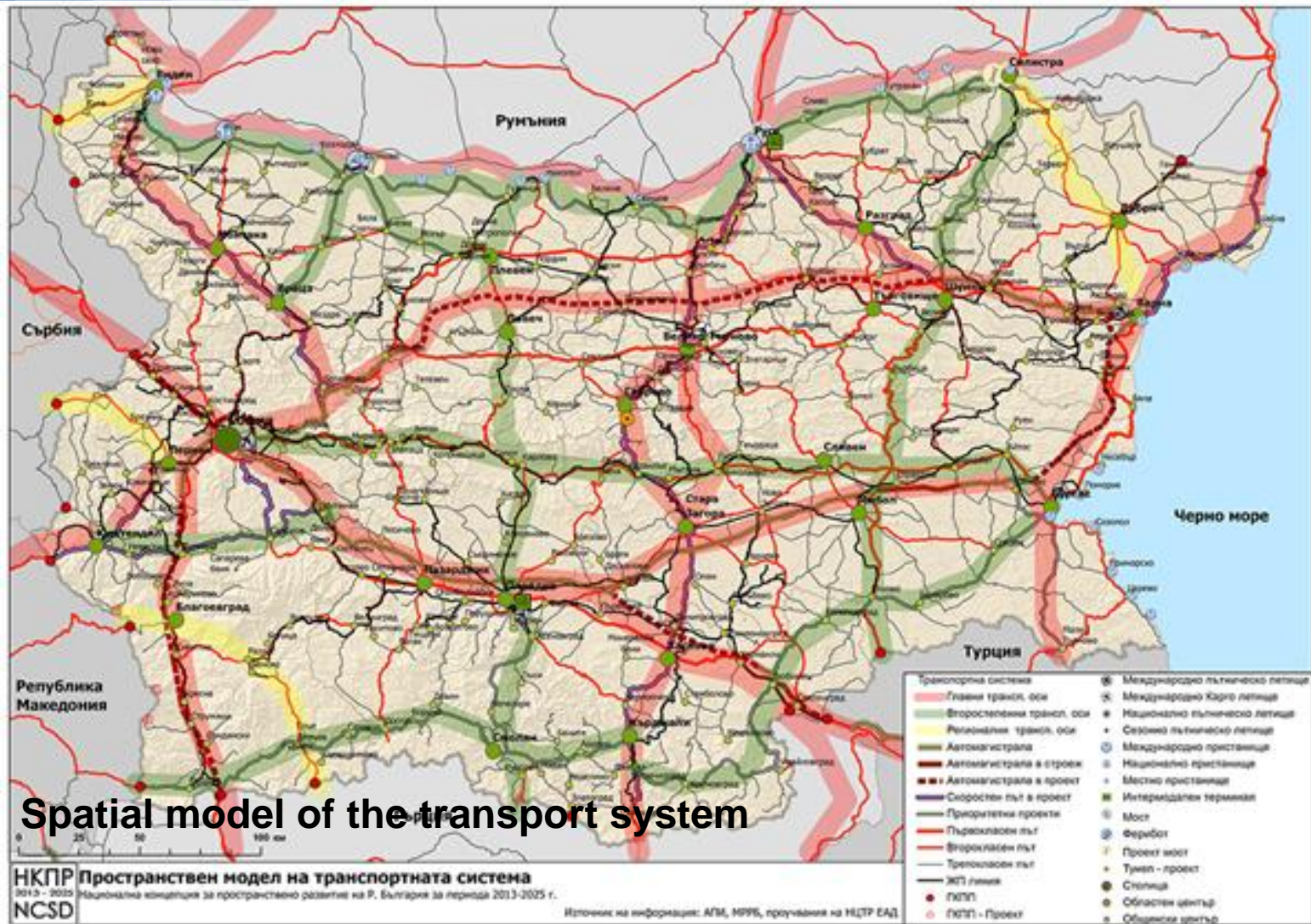
# SG1 Integration into the European space

---

Development of the national and transborder transport,  
energy,  
urban,  
cultural and  
bio- corridors and networks  
in order to achieve a spatial cohesion,  
cooperation and integration within the region  
and into the European space.



# SG1 Integration into the European space



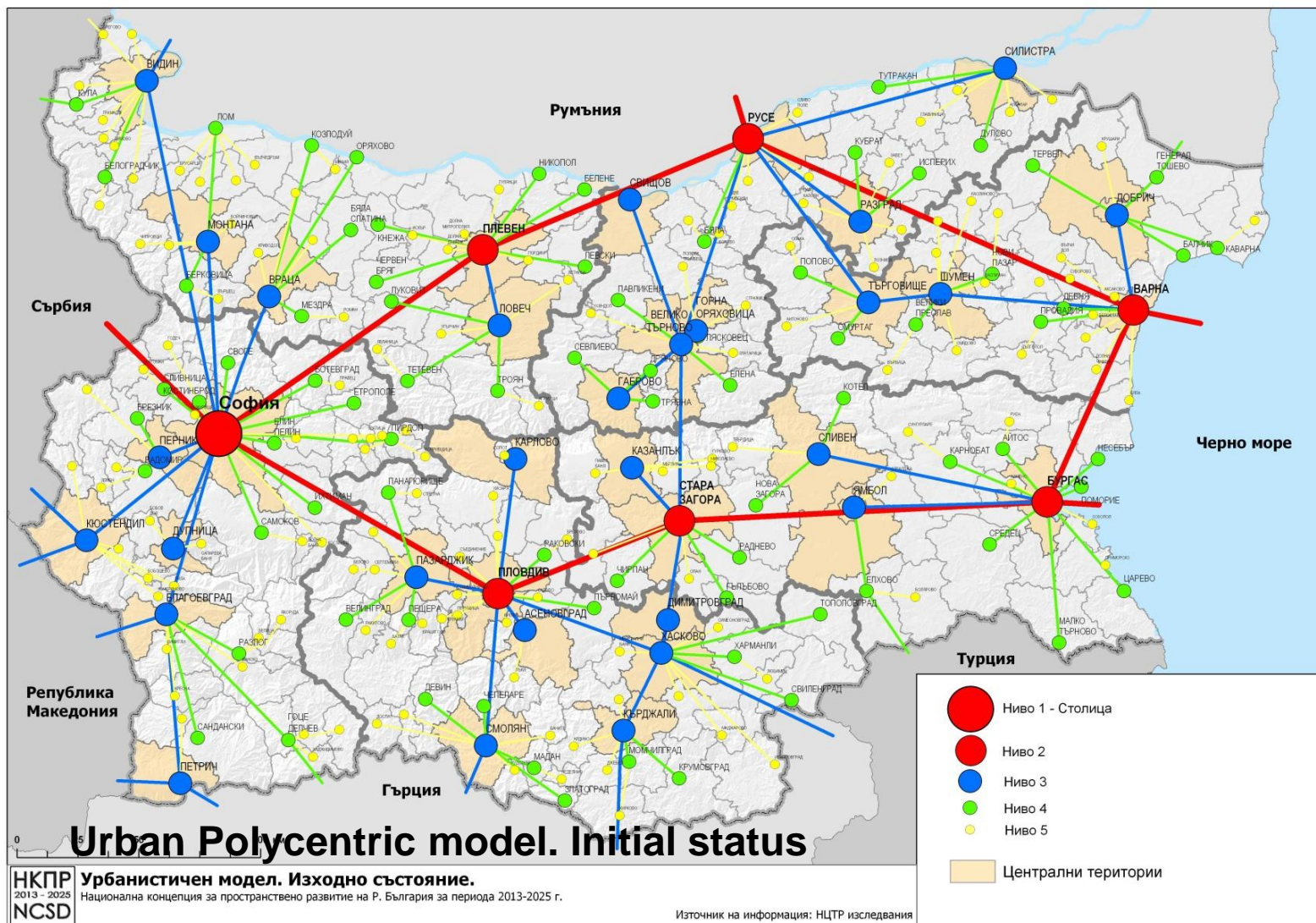
# SG2 Polycentric Spatial Development

---

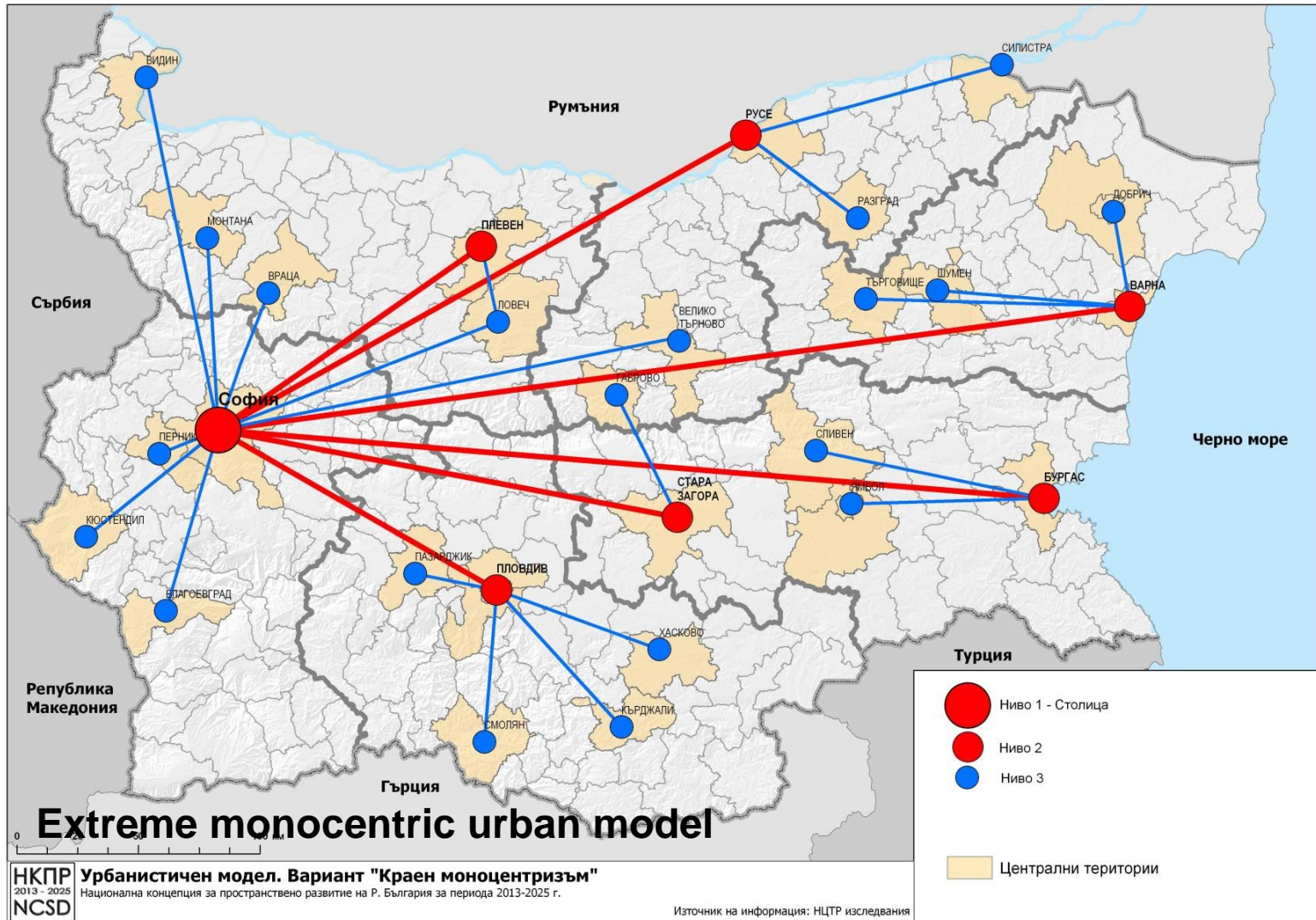
Strengthening the polycentric network of the urban centers with improved environmental quality, contributing to the balanced spatial development and reduction of disparities between central urban and peripheral rural areas.



# The initial status

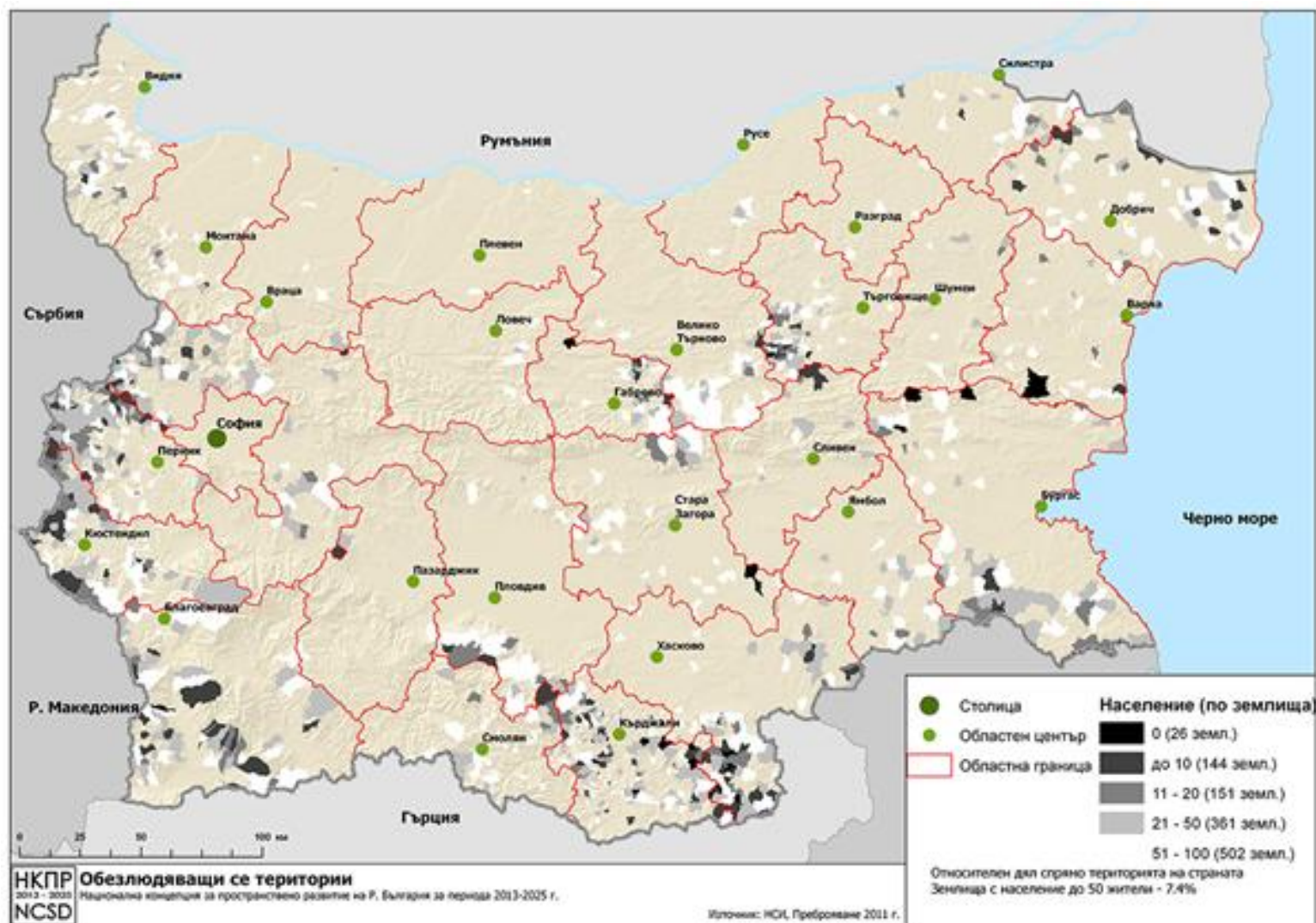


# Extreme monocentricity



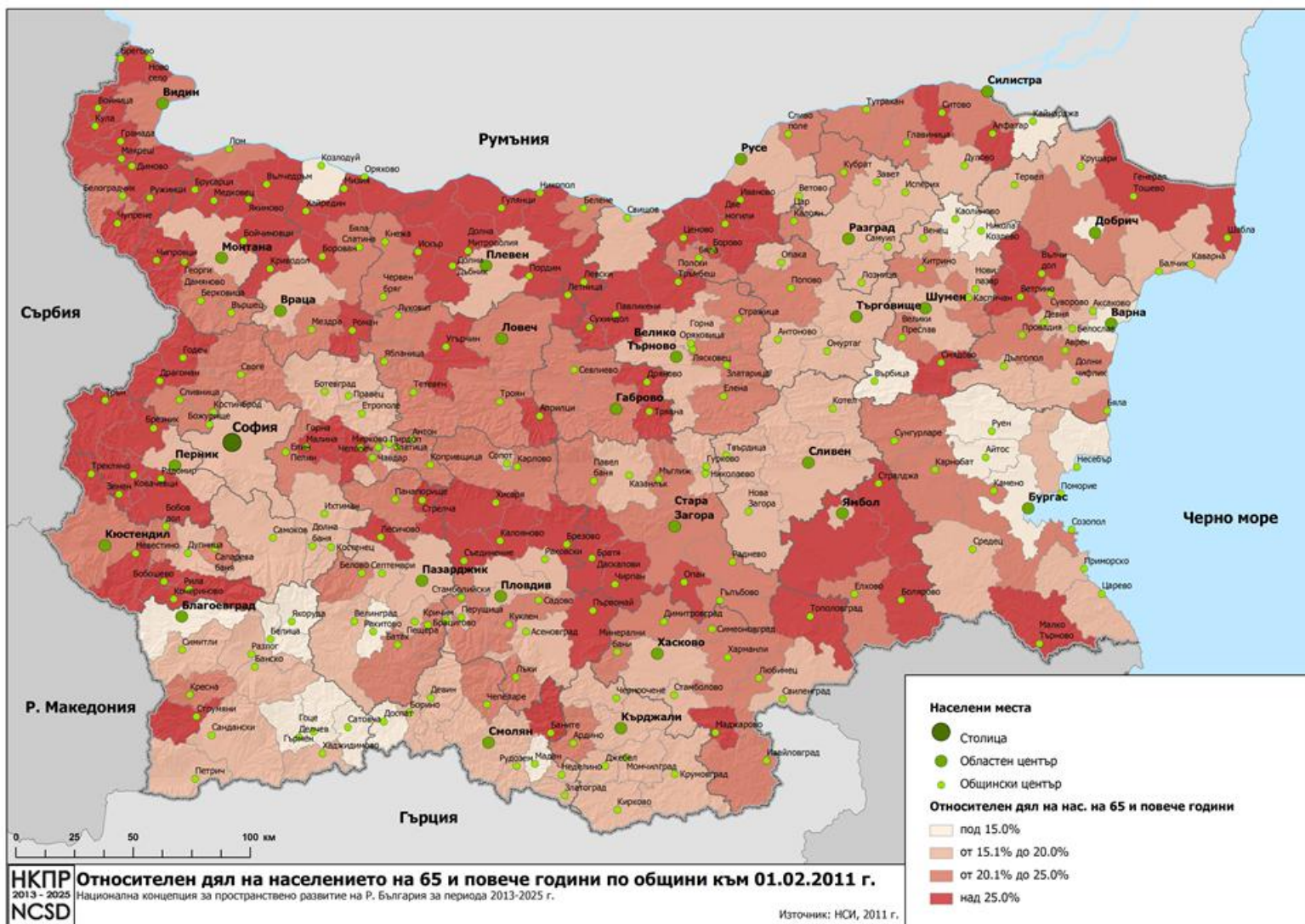


# Depopulated areas

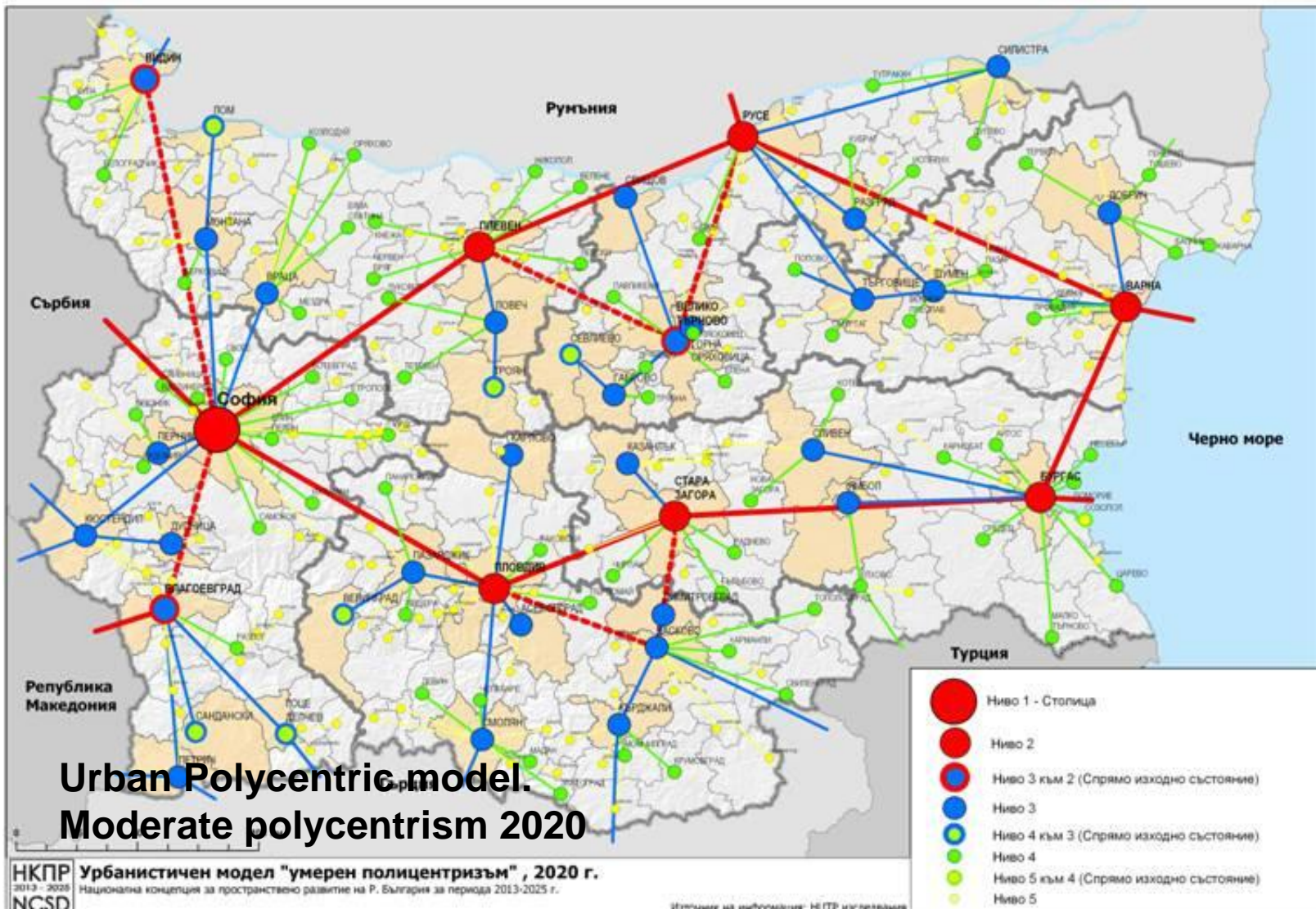




# Ageing population – 65+

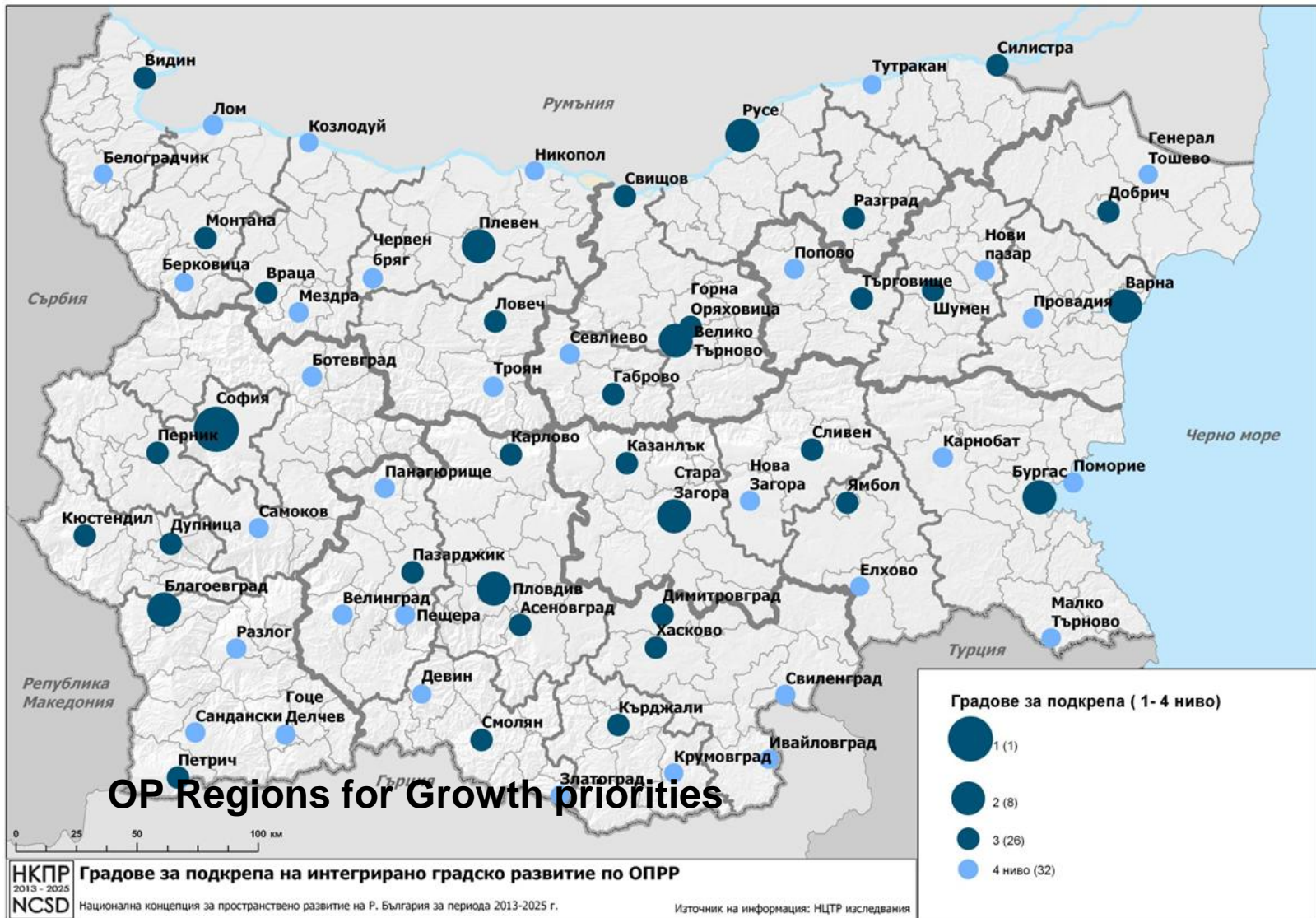


# SG2 Polycentric spatial development

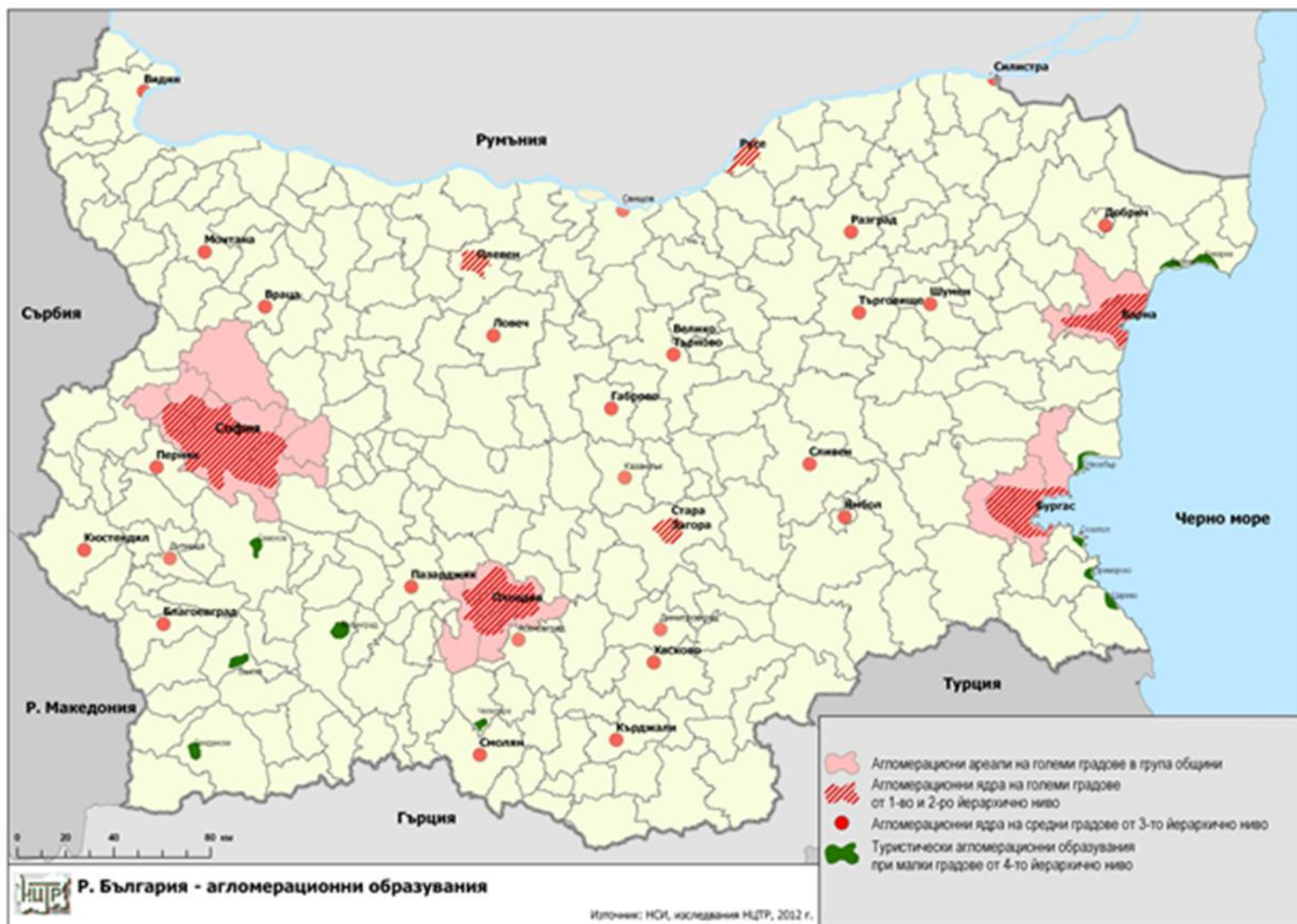




# Integrated Urban development support



# Agglomeration areas



# Agglomeration areas

---

1. Agglomeration areas of the big cities within the territory of a group of the neighbor municipalities – Sofia, Plovdiv, Varna and Burgas;
2. Agglomeration areas of the big cities within the territory of the own municipality - Rousse, Stara Zagora and Pleven;
3. Agglomeration areas of the middle size cities, reduced to the centre, within the territory of the own municipality;
4. Tourism agglomerations – with specific resources for sea, mountain and SPA tourism.

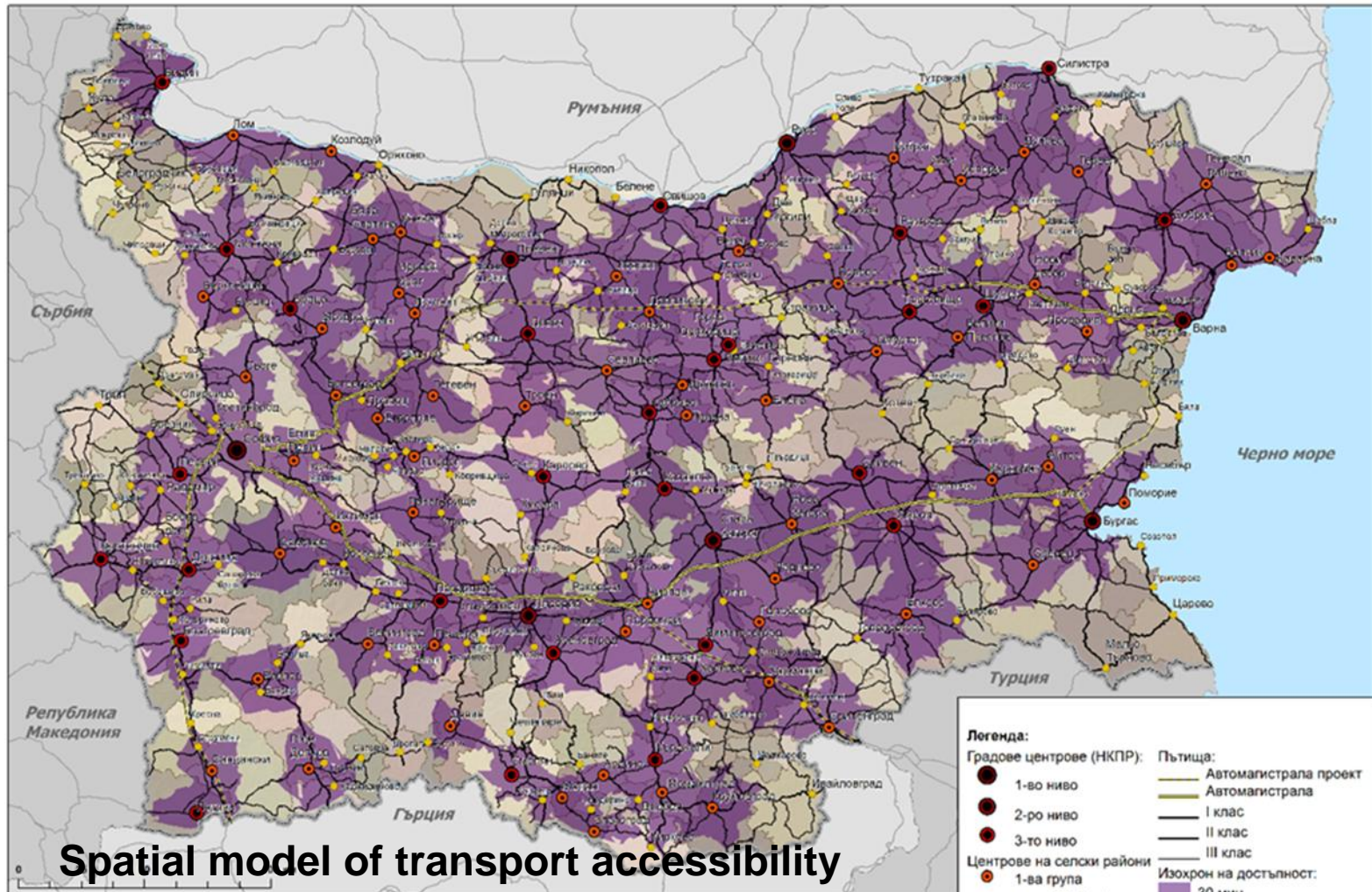
# **SG3 Spatial cohesion and access to services**

---

Development of the national transport, technical and social infrastructure for improving spatial cohesion of the regions and the urban centres and access to the higher quality educational, health, social and cultural services.



# SG3 Spatial cohesion and access to services



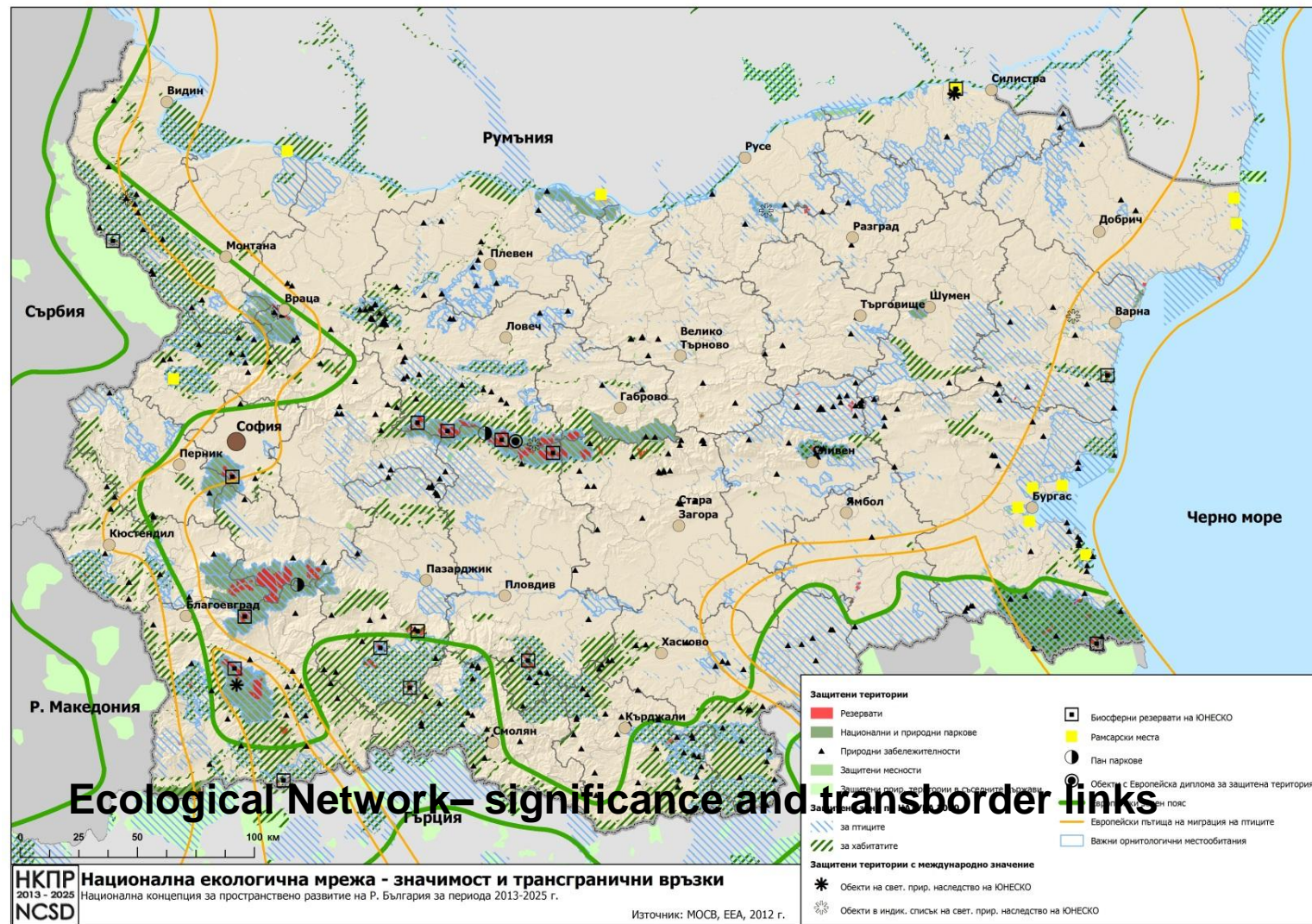
# **SG4 Preserved natural and cultural heritage**

---

Protection and development of the national system of protected natural and cultural treasures for supporting the ecological balance, the spatial natural and cultural identity and for integration of their values in the contemporary life.



# SG4 Preserved natural and cultural heritage

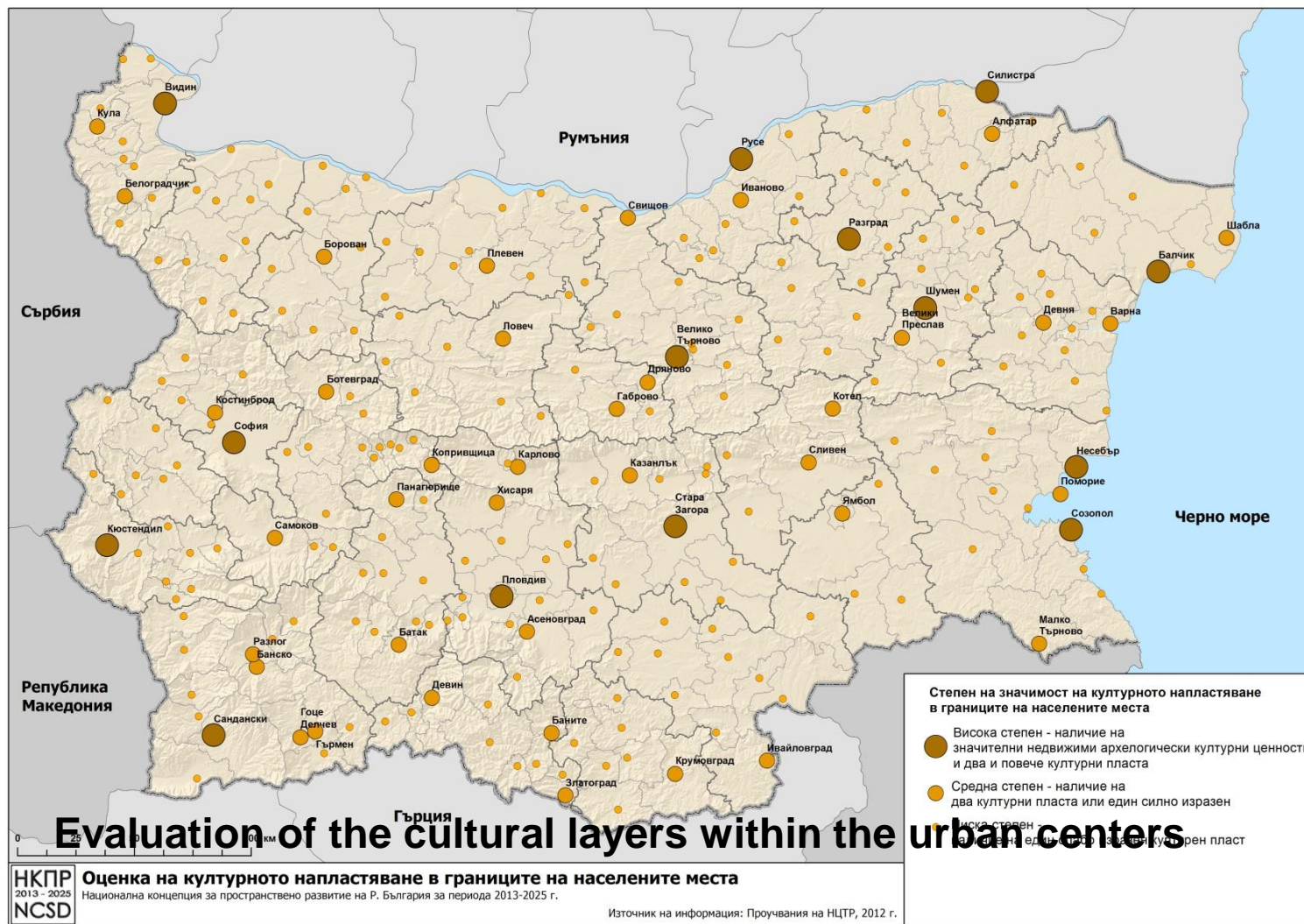








# SG4 Protected natural and cultural heritage

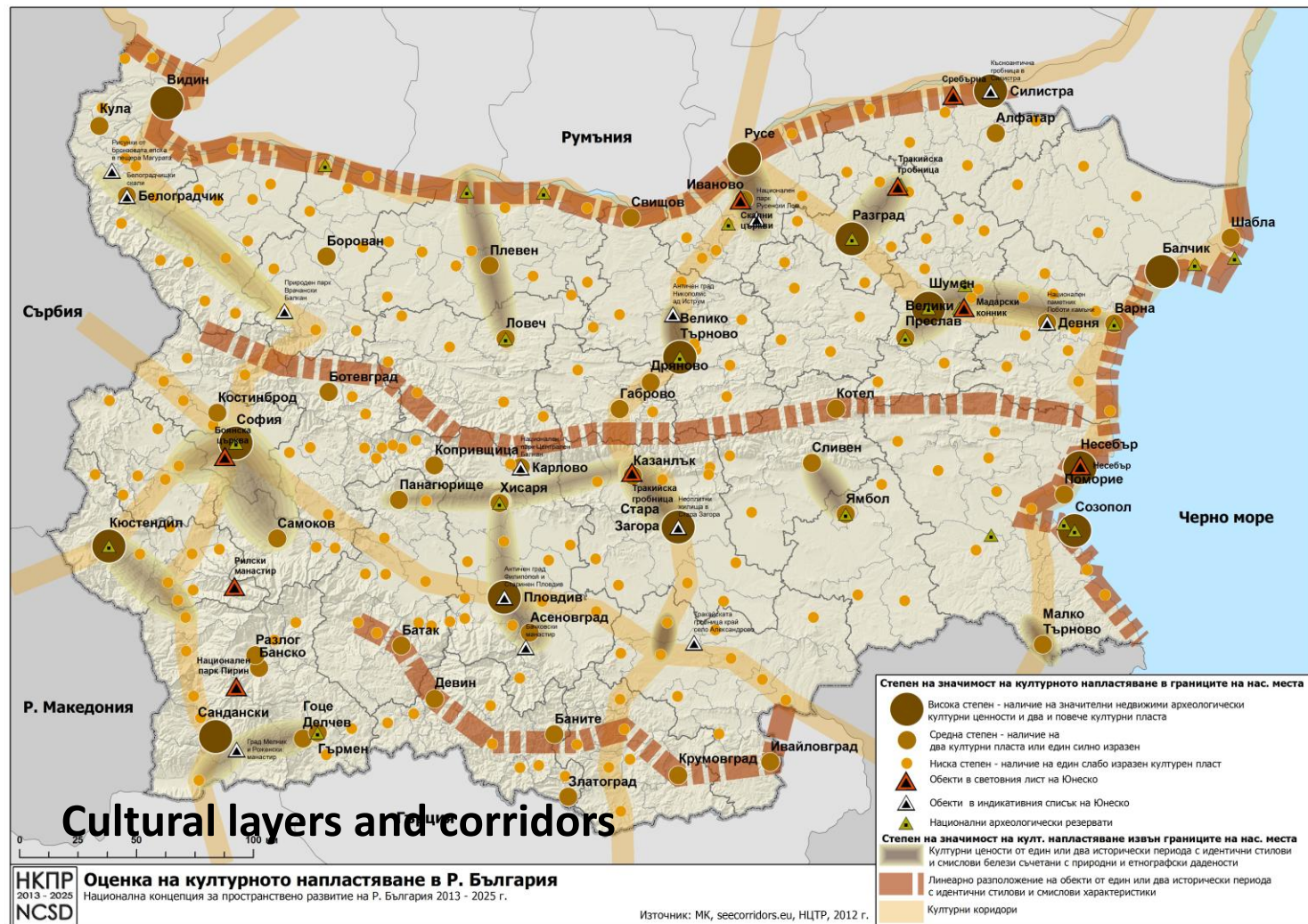








# SG4 Protected natural and cultural heritage







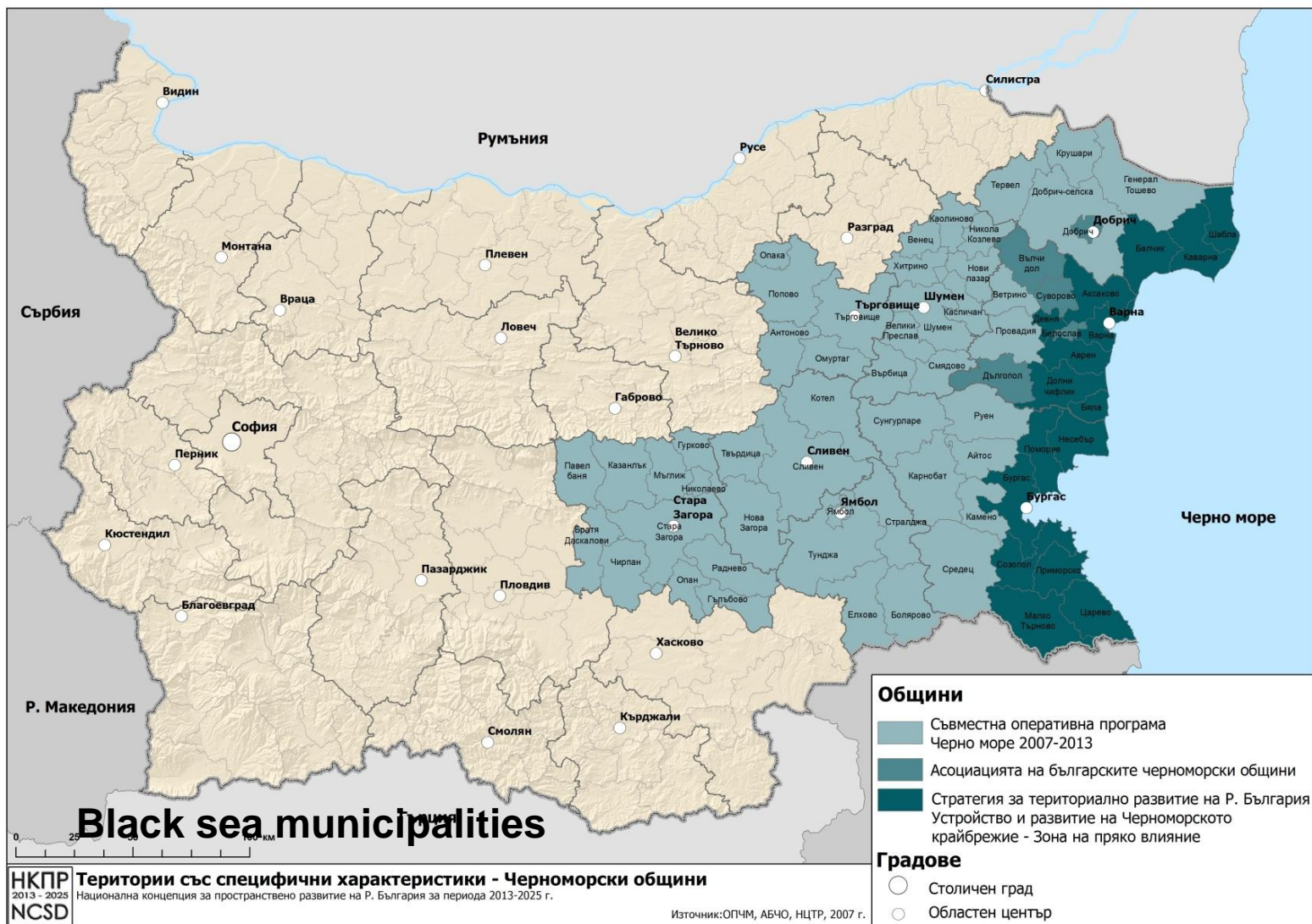
# **SG5 Stimulated Development of the specific territories**

---

Integrated planning and stimulated development of the territories with specific characteristics (Black sea coastal and Danube river basin areas, mountainous, border and territories in high risk) in order to protect and efficient use of their natural, economic, social and cultural potential.



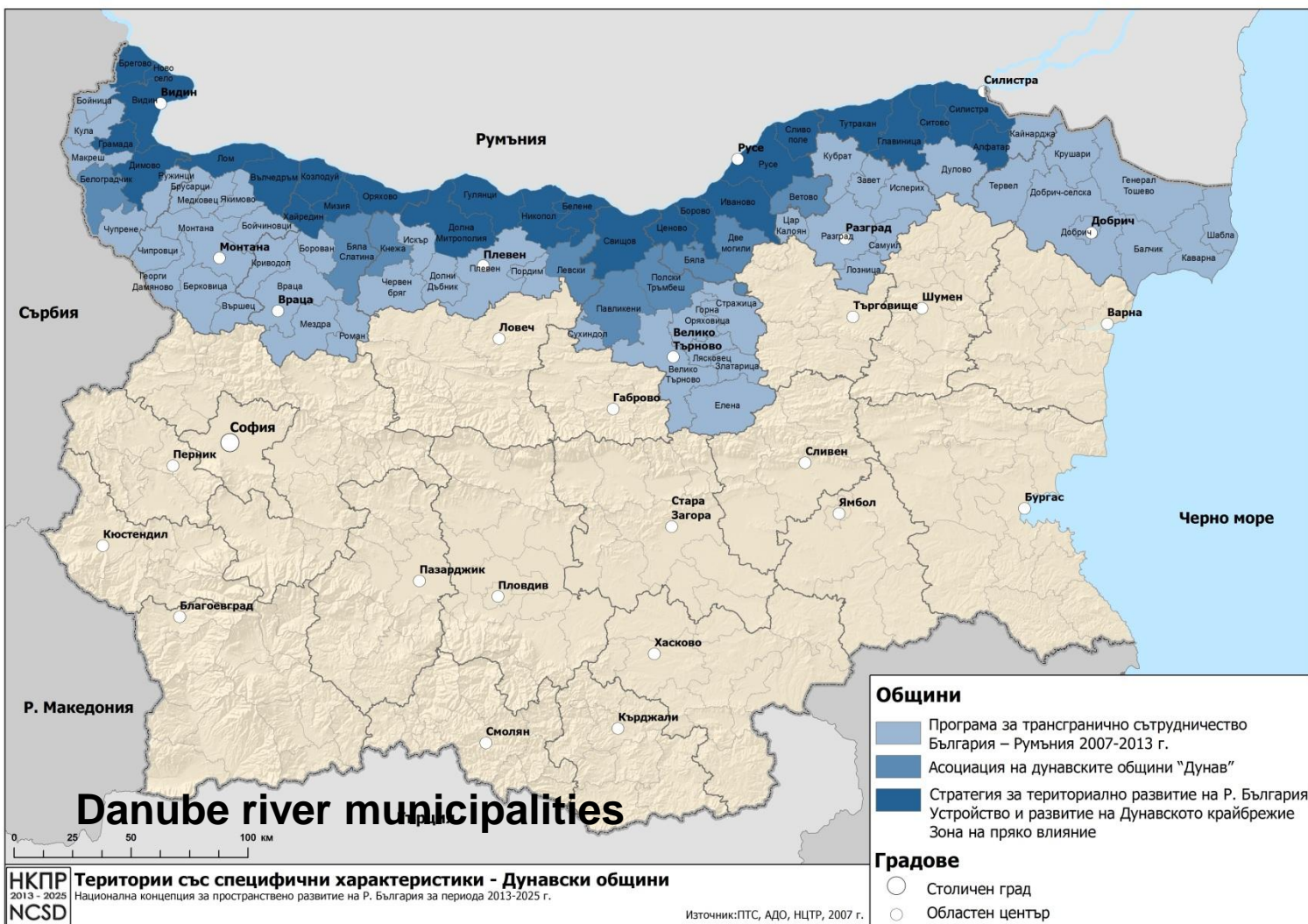
# Black sea coastal areas







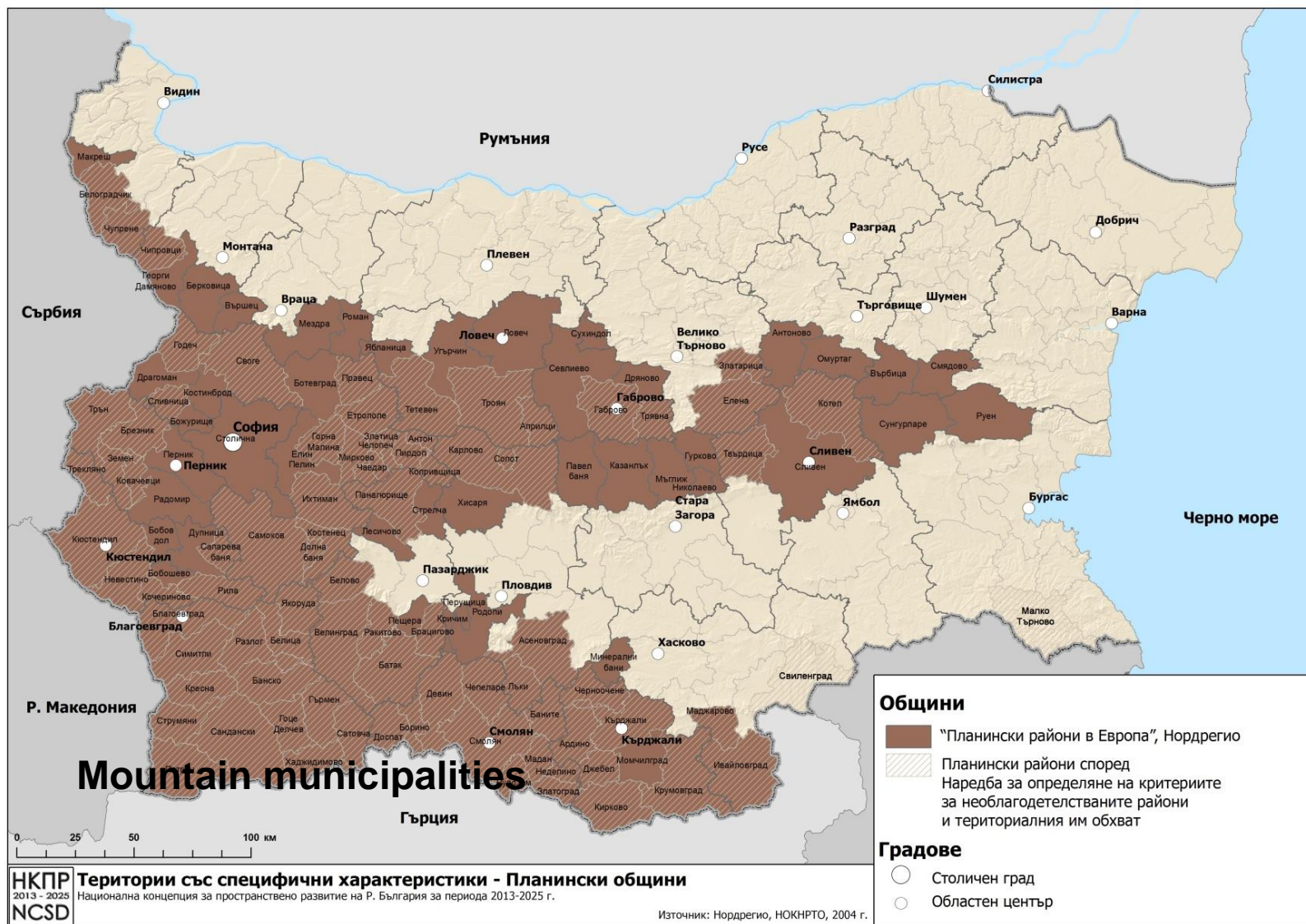
# Danube river areas







# Mountain areas

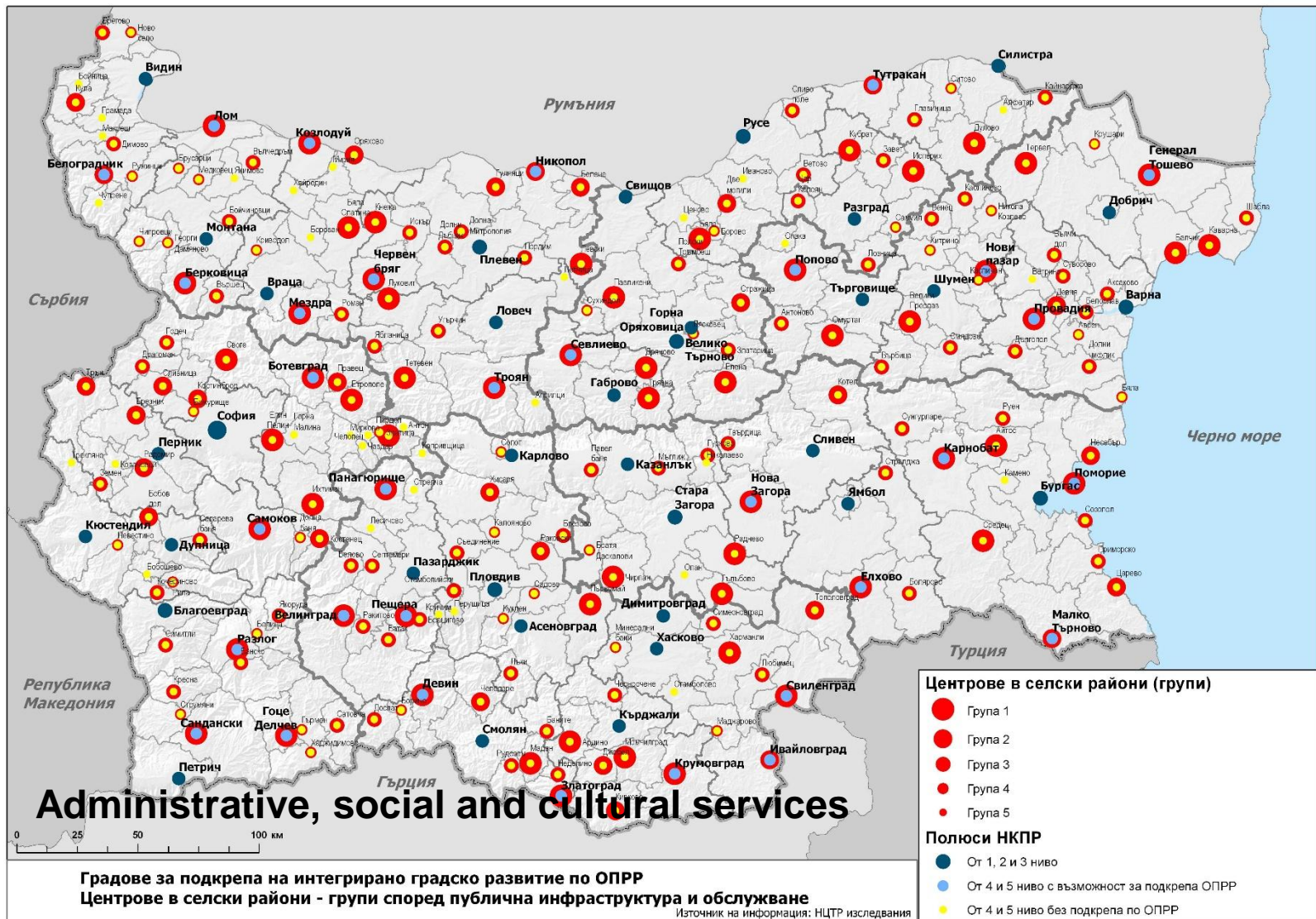








# Rural areas



# SG6 Competitiveness through growth and innovation zones

---

Enhancing competitiveness of the Bulgarian territory through state supported zones for growth and innovations in urban centers from the higher levels of the polycentric urban model.

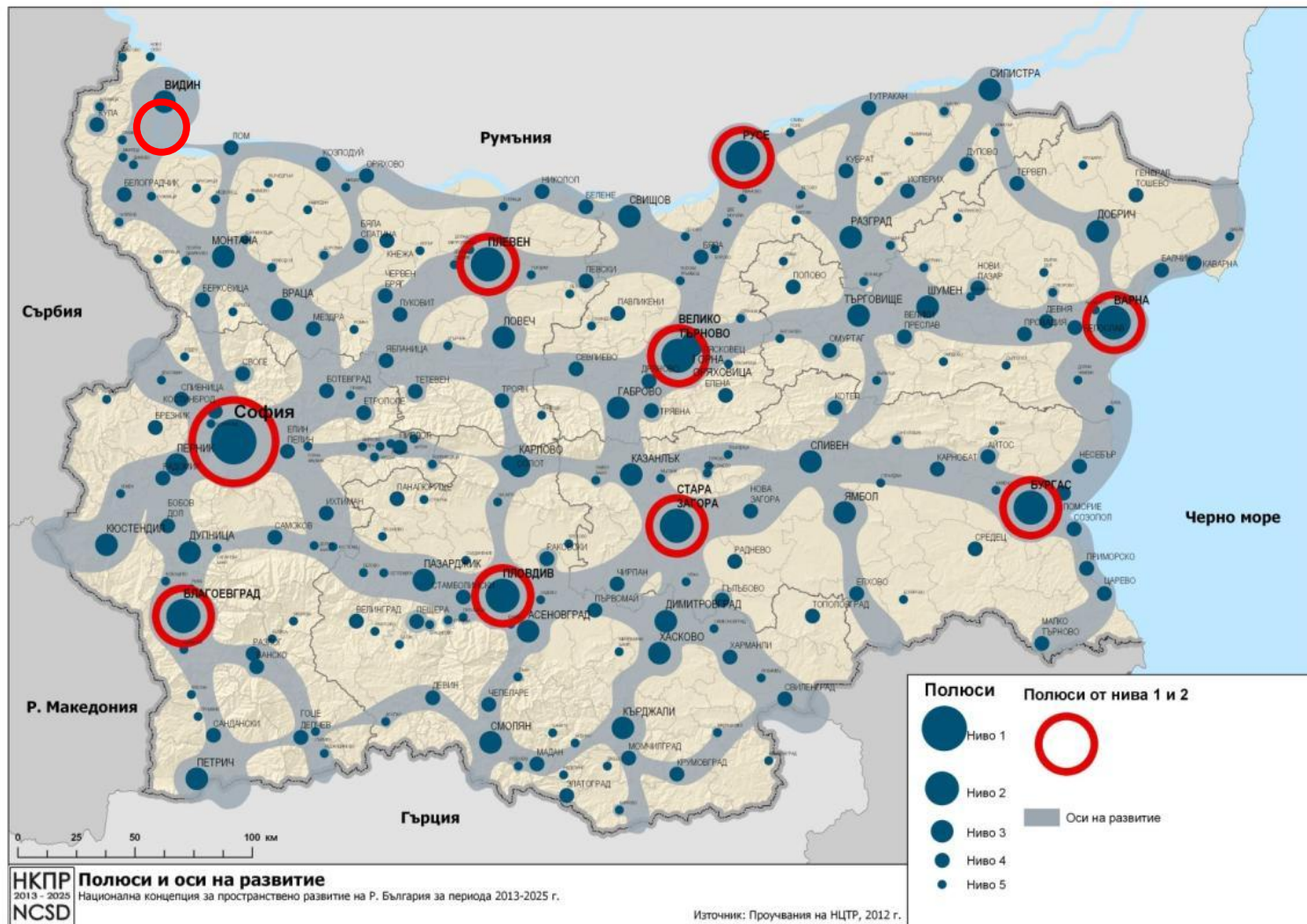
- High-tech parks

- Renovated industrial zones

- R&D centers

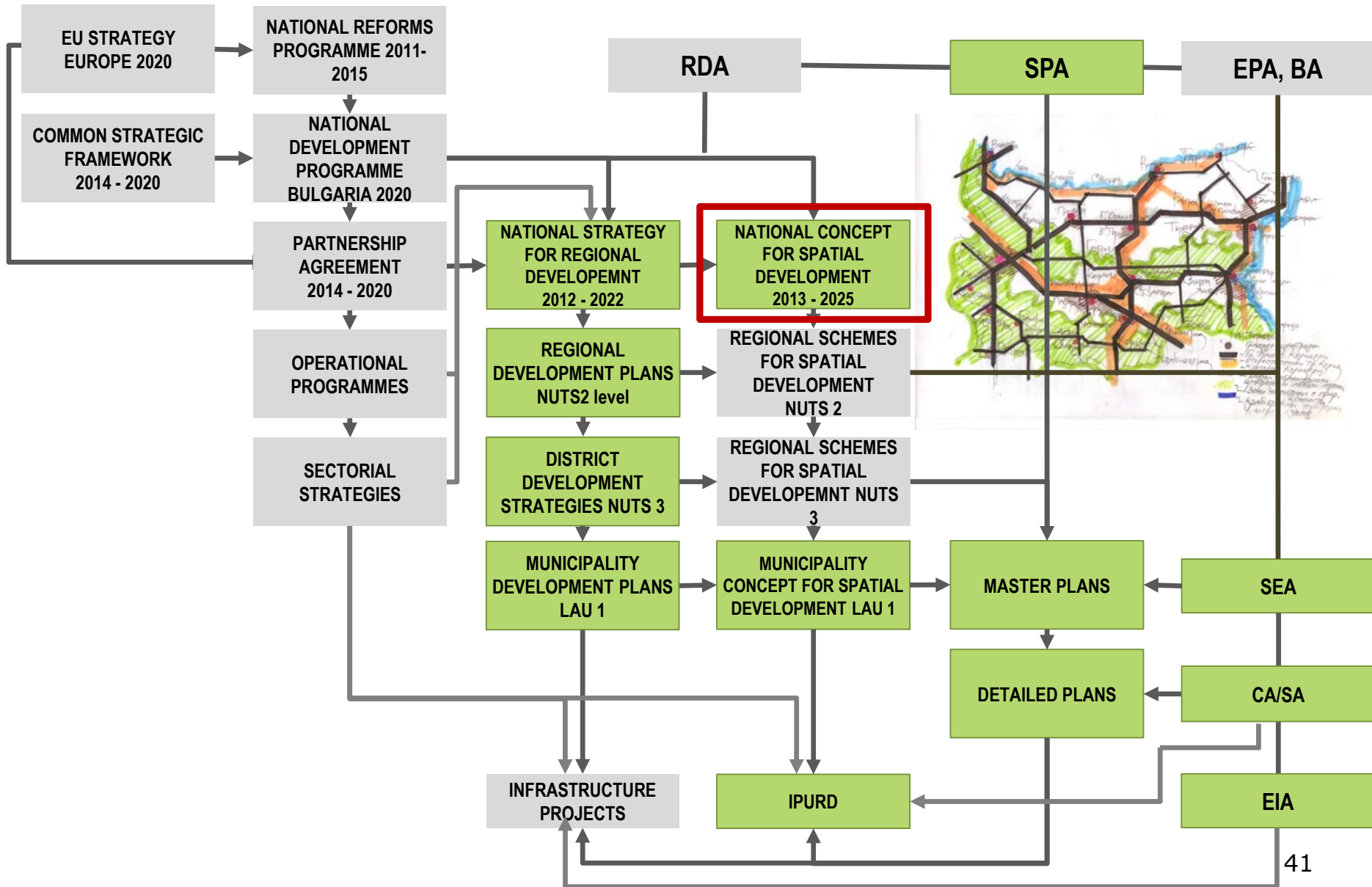
- Research staff mobility centers

# SG6 Competitiveness through stimulated centres of innovations and growth





# NCSD in the Planning System



# The new philosophy of the NCSD

---

- New way of thinking and behavior – from competition towards cooperation for achieving common goals in the national space;
- New type of coordination tools – new „multilayer” management system with well established links between strategic documents;
- New programming system, focused on a limited number of problems;
- New institutional framework – monitoring and effective implementation of the spatial strategy;
- An integrated system for programming and implementation of the state policies with spatial dimensions, instead of sectoral approach.

# The new philosophy of the NCSD

---

- The agglomeration policy – a key for prosperity through innovations, clusters and growth zones;
- Integrated planning of rural and urban areas – preserved autonomy and equality;
- Enforcement of the territorial dimensions of the sectoral policies - the "spatial development" as a common subject and challenge;
- The partnerships – the new driving force in spatial planning and development.



*The national space - our heritage for the future!*

**THANK YOU FOR YOUR ATTENTION!**

**Contact details:**

NCRD, 16-20 „Alabin“ str, Sofia 1000

Phone 03592 9800308

Fax 03592 9800312

Email [office@ncrdhp.bg](mailto:office@ncrdhp.bg) [vtroeva@ncrdhp.bg](mailto:vtroeva@ncrdhp.bg)

*Investing in your future*